

PREMIUM

SNOOK



SNOOK is a versatile, premium charging panel available in four sizes. It is always equipped with 60W USB-C/A charging and wireless charging. The added value of SNOOK lies in its retractable cables, which provide convenient signal connection or, in the CHARGER variant, direct power supply from the panel with cables connected from the bottom, combined with wireless charging and, optionally, an outlet. SNOOK is welcomed in demanding interiors due to its minimalist design, emphasis on intricately milled parts, and the matte surface of FENIX NTM.

- Metal body with FENIX NTM and durable painting
- Integrated wireless Qi charging
- USB-A QC & USB-C 60W PD included
- Highly compact and aesthetic
- Integrated retractable cables
- Supports wide range of socket standards



FRENCH type E SCHUKO type F UNI-VERSAL ITALY type L DENMARK type K SWISS type J GB type G US type B

SNOOK XS

SPOOK XS is a suitable option if an outlet is not needed.



Dimensions(mm)	Weight (g)	Product package(mm / kg)
124,5 × 73 × 80,5	720	220 × 200 × 100 / 1
Number of socket	USB-C/A 60W charging	Power cable
0	YES	2.9m, ending with a plug 25cm WIELAND or WINSTA mini
Wireless charging	Slots for cables	CUT OUT (mm)
YES	-	120 × 68

SNOOK S

SPOOK S with all available charging options.



Dimensions(mm)	Weight (g)	Product package(mm / kg)
176 × 73 × 80,5	860	220 × 200 × 100 / 1,2
Number of socket	USB-C/A 60W charging	Power cable
1	YES	2.9m, ending with a plug 25cm WIELAND or WINSTA mini
Wireless charging	Slots for cables	CUT OUT (mm)
YES	-	171 × 68

SNOOK M

SNOOK M always comes with USB-C/A charging and wireless charging, either purely with outlets or in combination with PASS-THRU positions for cables.



Dimensions(mm)	Weight (g)	Product package(mm / kg)
227,5 × 73 × 80,5	1020	360 × 200 × 100 / 1,4
Number of socket	USB-C/A 60W charging	Power cable
0, 2	YES	2.9m, ending with a plug 25cm WIELAND or WINSTA mini
Wireless charging	Slots for cables	CUT OUT (mm)
YES	0, 2, 4 (only using extra insert - paid option)	222,5 × 68

SNOOK L

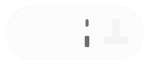
SNOOK L includes USB-C/A and wireless charging, an outlet, and PASS-THRU positions for cables. As an M variant, it can have USB-C/A charging ports on both the top and bottom.



Dimensions(mm)	Weight (g)	Product package(mm / kg)
292 × 74 × 62	1200	360 × 200 × 100 / 1,7
Number of socket	USB-C/A 60W charging	Power cable
1	YES	2.9m, ending with a plug 25cm WIELAND or WINSTA mini
Wireless charging	Slots for cables	CUT OUT (mm)
YES	0, 2, 4 (only using extra insert - paid option)	287 × 68

COLOURS

SPOOK is always offered as a fully lacquered panel with embedded FENIX NTM. We typically provide two mono color options and six combined designs.



BIANCO KOS

white FENIX NTM and painted frame paired to Bianco Kos colour



SILVER & BIANCO KOS

silver painted frame and white insert FENIX NTM



SILVER & GRIGIO EFESO

silver painted frame and grey insert FENIX NTM



SILVER & NERO INGO

silver painted frame and black insert FENIX NTM



SILVER & BLU FES

silver painted frame and blue insert FENIX NTM



NERO INGO

black FENIX NTM and painted frame paired to Nero Ingo colour



TAUPE & NERO INGO

bronze painted frame and black insert FENIX NTM



TAUPE & CASTORO OTTAWA

bronze painted frame and sand brown insert FENIX NTM

TECHNICAL DETAILS

Main attributes for all sizes of panel SNOOK

USB-C CHARGING SPECIFICATION

PowerDelivery Protocol up to 60W

SOCKETS

230V/10A (EU), 110V/10A (US)

MATERIALS

dural, stainless steel, steel, ABS plastics (sockets)

AVAILABLE IN THIS VERSION FROM

2022

USB-A CHARGING SPECIFICATION

QuickCharge 3.0 (up to 5A)

POWER SUPPLY

110 - 250V, 10A

INGRESS PROTECTION

IP22

POWER CABLES

Panels are always supplied with integrated power cables.



Cable with standard plug type

2.9 meter long cable (not available for US standard)



WINSTA mini

25 cm long pigtail cable with connector (male, 2+PE, 10A)



WIELAND GST18i3

25 cm long pigtail cable with connector (male, 2+PE, 10A)

LIST OF VARIANTS



SNOOK XS, USB-C/A & WIRELESS CHARGING

BIANCO KOS	white frame and FENIX NTM	SNXS-CAQ-KW
SILVER & BIANCO DOVER	silver frame, white FENIX NTM	SNXS-CAQ-DS
SILVER & GRIGIO EFESO	silver frame, grey FENIX NTM	SNXS-CAQ-GS
SILVER & NERO INGO	silver frame, black FENIX NTM	SNXS-CAQ-NS
SILVER & BLU FES	silver frame, blue FENIX NTM	SNXS-CAQ-BS
NERO INGO	black frame and FENIX NTM	SNXS-CAQ-NC
TAUPE & NERO INGO	bronze frame, black FENIX NTM	SNXS-CAQ-NT
TAUPE & CASTORO OTTAWA	bronze frame, brown FENIX NTM	SNXS-CAQ-CT



SNOOK M, 1x SOCKET, USB-C/A & WIRELESS CHARGING

BIANCO KOS	white frame and FENIX NTM	SNSS-CAQ-1UN-KW
SILVER & BIANCO DOVER	silver frame, white FENIX NTM	SNSS-CAQ-1UN-DS
SILVER & GRIGIO EFESO	silver frame, grey FENIX NTM	SNSS-CAQ-1UN-GS
SILVER & NERO INGO	silver frame, black FENIX NTM	SNSS-CAQ-1UN-NS
SILVER & BLU FES	silver frame, blue FENIX NTM	SNSS-CAQ-1UN-BS
NERO INGO	black frame and FENIX NTM	SNSS-CAQ-1UN-NC
TAUPE & NERO INGO	bronze frame, black FENIX NTM	SNSS-CAQ-1UN-NT
TAUPE & CASTORO OTTAWA	bronze frame, brown FENIX NTM	SNSS-CAQ-1UN-CT



SNOOK M, 2x SOCKET, USB-C/A & WIRELESS CHARGING

BIANCO KOS	white frame and FENIX NTM	SNMS-CAQ-2UN-KW
SILVER & BIANCO DOVER	silver frame, white FENIX NTM	SNMS-CAQ-2UN-DS
SILVER & GRIGIO EFESO	silver frame, grey FENIX NTM	SNMS-CAQ-2UN-GS
SILVER & NERO INGO	silver frame, black FENIX NTM	SNMS-CAQ-2UN-NS
SILVER & BLU FES	silver frame, blue FENIX NTM	SNMS-CAQ-2UN-BS
NERO INGO	black frame and FENIX NTM	SNMS-CAQ-2UN-NC
TAUPE & NERO INGO	bronze frame, black FENIX NTM	SNMS-CAQ-2UN-NT
TAUPE & CASTORO OTTAWA	bronze frame, brown FENIX NTM	SNMS-CAQ-2UN-CT



SNOOK M, USB-C/A & WIRELESS CHARGING, 2x PASS-THRU (slot for cable)

BIANCO KOS	white frame and FENIX NTM	SNMS-CAQ-2PT-KW
SILVER & BIANCO DOVER	silver frame, white FENIX NTM	SNMS-CAQ-2PT-DS
SILVER & GRIGIO EFESO	silver frame, grey FENIX NTM	SNMS-CAQ-2PT-GS
SILVER & NERO INGO	silver frame, black FENIX NTM	SNMS-CAQ-2PT-NS
SILVER & BLU FES	silver frame, blue FENIX NTM	SNMS-CAQ-2PT-BS
NERO INGO	black frame and FENIX NTM	SNMS-CAQ-2PT-NC
TAUPE & NERO INGO	bronze frame, black FENIX NTM	SNMS-CAQ-2PT-NT
TAUPE & CASTORO OTTAWA	bronze frame, brown FENIX NTM	SNMS-CAQ-2PT-CT



SNOOK M CHARGER, USB-C/A & WIRELESS CHARGING, 2x PASS-THRU (slot for cable)

BIANCO KOS	white frame and FENIX NTM	SNMS-BCAQ-2PT-KW
SILVER & BIANCO DOVER	silver frame, white FENIX NTM	SNMS-BCAQ-2PT-DS
SILVER & GRIGIO EFESO	silver frame, grey FENIX NTM	SNMS-BCAQ-2PT-GS
SILVER & NERO INGO	silver frame, black FENIX NTM	SNMS-BCAQ-2PT-NS
SILVER & BLU FES	silver frame, blue FENIX NTM	SNMS-BCAQ-2PT-BS
NERO INGO	black frame and FENIX NTM	SNMS-BCAQ-2PT-NC
TAUPE & NERO INGO	bronze frame, black FENIX NTM	SNMS-BCAQ-2PT-NT
TAUPE & CASTORO OTTAWA	bronze frame, brown FENIX NTM	SNMS-BCAQ-2PT-CT



SNOOK L, 1x SOCKET, USB-C/A & WIRELESS CHARGING, 2x PASS-THRU (slot for cable)

BIANCO KOS	white frame and FENIX NTM	SNLS-CAQ-1UN-2PT-KW
SILVER & BIANCO DOVER	silver frame, white FENIX NTM	SNLS-CAQ-1UN-2PT-DS
SILVER & GRIGIO EFESO	silver frame, grey FENIX NTM	SNLS-CAQ-1UN-2PT-GS
SILVER & NERO INGO	silver frame, black FENIX NTM	SNLS-CAQ-1UN-2PT-NS
SILVER & BLU FES	silver frame, blue FENIX NTM	SNLS-CAQ-1UN-2PT-BS
NERO INGO	black frame and FENIX NTM	SNLS-CAQ-1UN-2PT-NC
TAUPE & NERO INGO	bronze frame, black FENIX NTM	SNLS-CAQ-1UN-2PT-NT
TAUPE & CASTORO OTTAWA	bronze frame, brown FENIX NTM	SNLS-CAQ-1UN-2PT-CT



SNOOK L CHARGER, 1x SOCKET, USB-C/A & WIRELESS CHARGING, 2x PASS-THRU

BIANCO KOS	white frame and FENIX NTM	SNLS-BCAQ-1UN-2PT-KW
SILVER & BIANCO DOVER	silver frame, white FENIX NTM	SNLS-BCAQ-1UN-2PT-DS
SILVER & GRIGIO EFESO	silver frame, grey FENIX NTM	SNLS-BCAQ-1UN-2PT-GS
SILVER & NERO INGO	silver frame, black FENIX NTM	SNLS-BCAQ-1UN-2PT-NS
SILVER & BLU FES	silver frame, blue FENIX NTM	SNLS-BCAQ-1UN-2PT-BS
NERO INGO	black frame and FENIX NTM	SNLS-BCAQ-1UN-2PT-NC
TAUPE & NERO INGO	bronze frame, black FENIX NTM	SNLS-BCAQ-1UN-2PT-NT
TAUPE & CASTORO OTTAWA	bronze frame, brown FENIX NTM	SNLS-BCAQ-1UN-2PT-CT

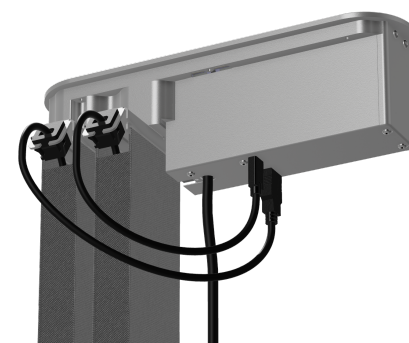
SNOOK CHARGER: INTEGRATED CHARGING IN THE CABLES

SNOOK CHARGER, in both M and L variants, offers USB-C/A charging ports at the bottom for direct connection of USB-C and Lightning/USB-A cables.

COMPLETE CHARGING AND POWERING FROM ONE PLACE

Two charging cables directly powered from the panel. USB-C 60W for a laptop and Lightning for a phone or headphones. In addition, wireless charging is available, and in the L variant, there is also a power outlet. This variant is typically configured with a USB-C cable and a Lightning/USB-A cable as standard.

For the charger variant, it is possible to choose different combinations of cables and utilize the charging ports, for example, to power a fixed device on the desk using SNOOK INSERT with pass-through cables.



SNOOK INSERT WITH CABLES

The cable insert is available as an additional option, featuring a dual-cable position with two pass-through cables (on the sides).



SNOOK INSERT, 2x PASS-THRU (cable slot), 2x GROMMET

WHITE	white	SNINS-W
SILVER	silver	SNINS-S
BLACK	black	SNINS-B
TAUPE	bronze	SNINS-T

CABLE PULL-OUT OPTIONS IN THE PANEL

SNOOK offers high variability for retractable cables with either a PASS-THRU pocket or a PULL-OUT system with a pulley. This applies to both supplied cables and user-provided cables.

CABLE INSERT AND UNDER TABLE HOLDER

The cable PASS-THRU allows for easy and gentle cable threading through the panel, whether it's passive cables threaded through the panel or user-retractable cables.

The cable insert is easily inserted and secured with a single screw from the bottom after putting the cable through the panel.

Cable holder under the desk for cable length set up

EXTENDED OPTIONS FOR CABLE POSITIONS



INDIVIDUAL CABLE

The cable recommended by us in the given standard.



PASS-THRU BAG

Textile soft custom-made 33 cm bag in black with a metal holder linked to the panel's cable holder. It is provided as an accessory item.



PULL-OUT WITH PULLEY

Textile soft-sewn 65 cm bag (available in black or grey) with a metal holder connected to the panel's cable holder and a versatile pulley suitable for various types of cables.



PULL-OUT WITH PULLEY AND CABLE

PULL-OUT with a cable of your choice (options listed below).

INDIVIDUAL CABLES FOR PASS-THRU INTEGRATION IN THE PANEL

Cable installation is possible before or after installing the panel into the table. The cable can be secured to the panel using a cable holder, adjusted to the desired length.



Cable HHDMI 1.4 (MALE-MALE), 4K 30Hz, awg32/22

HDMI (M-M), 2M	ACA-HMHM-20
HDMI (M-M), 3M	ACA-HMHM-30



CableHDMI 1.4 (MALE-FEMALE), 4K 30Hz, awg32/22

HDMI (M-F), 2M	ACA-HMHF-20
----------------	-------------



Cable CAT6 RJ45 (MALE-MALE), UTP, AWG26/7

LAN Cat6 (M-M), 2M	ACA-LMLM-20
LAN Cat6 (M-M), 3M	ACA-LMLM-30



Cable USB3.0 (MALE-FEMALE), 5Gbps, AWG28/28, 9 pin

USB-A (M-F), 2M	ACA-AMAF-20
USB-A (M-F), 3M	ACA-AMAF-30



Cable USB-C (MALE-MALE), 3.2 gen1, 10 Gbps

USB-C (M-M), 2M	ACA-CMCM-20
USB-C (M-M), 3M	ACA-CMCM-30



Cable USB-C (MALE-FEMALE), 3.2 gen1, 10 Gbps

USB-C (M-F), 2M	ACA-CMCF-20
-----------------	-------------



Cable with connector Apple Lightning na USB-C (MALE-MALE)

LIGHTNING/USB-C (M-M), 2M	ACA-GMCM-20
---------------------------	-------------



Cable with Apple Lightning connector/USB-A (MALE-MALE)

LIGHTNING/USB-A (M-M), 2M	ACA-GMAM-20
---------------------------	-------------



Cable with USB-C/HDMI (MALE-MALE)

USB-C/HDMI (M-M), 2M	ACA-CMHM-20
----------------------	-------------

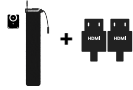


Soft fabric bag for PASS-THRU cable slot (linked to the panel)

PASS-THRU BAG, no cable	BLACK	APT-BAG-B
-------------------------	-------	-----------

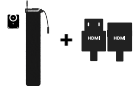
PULL-OUT CABLE SYSTEM FOR INTEGRATION INTO PASS-THRU ON THE PANEL

Individually packaged PULL-OUT with panel attachment and pulley for use with your own cable or pre-equipped with a selected cable from the



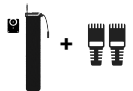
PULL-OUT with cable HDMI 1.4 (MALE-MALE), 4K 30Hz, awg32/22

PULL-OUT & HDMI (M-M), 2M	BLACK	APO-HMHM-20-B
PULL-OUT & HDMI (M-M), 2M	GREY	APO-HMHM-20-G
PULL-OUT & HDMI (M-M), 3M	BLACK	APO-HMHM-30-B
PULL-OUT & HDMI (M-M), 3M	GREY	APO-HMHM-30-G



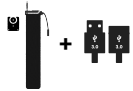
PULL-OUT with cable HDMI 1.4 (MALE-FEMALE), 4K 30Hz, awg32/22

PULL-OUT & HDMI (M-F), 2M	BLACK	APO-HMHF-20-B
PULL-OUT & HDMI (M-F), 2M	GREY	APO-HMHF-20-G



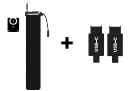
PULL-OUT with CAT6 RJ45 (MALE-MALE), UTP, AWG26/7

PULL-OUT & LAN Cat6 (M-M), 2M	BLACK	APO-LMLM-20-B
PULL-OUT & LAN Cat6 (M-M), 2M	GREY	APO-LMLM-20-G
PULL-OUT & LAN Cat6 (M-M), 3M	BLACK	APO-LMLM-30-B
PULL-OUT & LAN Cat6 (M-M), 3M	GREY	APO-LMLM-30-G



PULL-OUT with cable USB3.0 (MALE-FEMALE), 5Gbps, AWG28/28, 9 pin

PULL-OUT & USB-A (M-F), 2M	BLACK	APO-AMAF-20-B
PULL-OUT & USB-A (M-F), 2M	GREY	APO-AMAF-20-G
PULL-OUT & USB-A (M-F), 3M	BLACK	APO-AMAF-30-B
PULL-OUT & USB-A (M-F), 3M	GREY	APO-AMAF-30-G



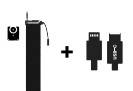
PULL-OUT with cable USB-C (MALE-MALE), 3.2 gen1, 10 Gbps

PULL-OUT & USB-C (M-M), 2M	BLACK	APO-CMCM-20-B
PULL-OUT & USB-C (M-M), 2M	GREY	APO-CMCM-20-G
PULL-OUT & USB-C (M-M), 3M	BLACK	APO-CMCM-30-B
PULL-OUT & USB-C (M-M), 3M	GREY	APO-CMCM-30-G



PULL-OUT with cable USB-C (MALE-FEMALE), 3.2 gen1, 10 Gbps

PULL-OUT & USB-C (M-F), 2M	BLACK	APO-CMCF-20-B
PULL-OUT & USB-C (M-F), 2M	GREY	APO-CMCF-20-G



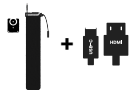
PULL-OUT with cable with Apple Lightning connector/USB-C (MALE-MALE)

PULL-OUT & LIGHTNING/USB-C (M-M), 2M	BLACK	APO-LMCM-20-B
PULL-OUT & LIGHTNING/USB-C (M-M), 2M	GREY	APO-LMCM-20-G



PULL-OUT with cable with Apple Lightning connector/USB-A (MALE-MALE)

PULL-OUT & LIGHTNING/USB-A (M-M), 2M	BLACK	APO-LMAM-20-B
PULL-OUT & LIGHTNING/USB-A (M-M), 2M	GREY	APO-LMAM-20-G



PULL-OUT with USB-C/ HDMI (MALE-MALE)

PULL-OUT & USB-C/HDMI (M-M), 2M	BLACK	APO-HMHF-20-B
PULL-OUT & USB-C/na HDMI (M-M), 2M	GREY	APO-HMHF-20-G



PULL-OUT WITH PULLEY (no cable)

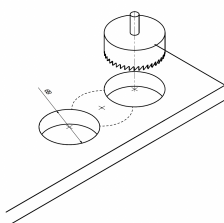
PULL-OUT BAG with pulley, BLACK	APO-BAG-B
PULL-OUT BAG with pulley, GREY	APO-BAG-G

INSTALLATION INSTRUCTION

SNOOK is installed into a cut or milled opening in the tabletop.

To install the SNOOK panel, you will need a jigsaw and a hole saw with a diameter of 68mm. Of course, CNC milling can also be used. Here are the installation steps:

- 1 | Mark the two end holes and drill them using the hole saw.
- 2 | Cut the bridge between the holes using a jigsaw.
- 3 | Fit the panel into the opening, place the mounting frame from underneath, and tighten the screws according to the strength of the tabletop.
- 4 | Connect the panel to the electrical outlet and AV connection (if provided).



PRODUCT PACKAGE

Panel SNOOK with power cable, mounting frame, mounting screws

THICKNESS OF THE DESK

10 - 40 mm (possibility up to 60 mm with custom screws, not part of a standard package)

INSTALLATION MANUAL

panconnect.eu/en/download/



ACCESSORIES FOR PANEL SPOOK

SNOOK can be expanded with a separate cable pass-through installed into the tabletop, designed in a color scheme that matches the panel's design.



SPOOK SQUARE CABLE GROMMET WITH EMBEDDED FENIX NTM AND BRUSH INSERTS

BIANCO KOS	white frame and FENIX NTM	SN-PTH-KW
SILVER & BIANCO DOVER	silver frame, white FENIX NTM	SN-PTH-DS
SILVER & GRIGIO EFESO	silver frame, grey FENIX NTM	SN-PTH-GS
SILVER & NERO INGO	silver frame, black FENIX NTM	SN-PTH-NS
SILVER & BLU FES	silver frame, blue FENIX NTM	SN-PTH-BS
NERO INGO	black frame and FENIX NTM	SN-PTH-NC
TAUPE & NERO INGO	bronze frame, black FENIX NTM	SN-PTH-NT
TAUPE & CASTORO OTTAWA	bronze frame, brown FENIX NTM	SN-PTH-CT

SAFETY & RECYCLATION



PANCONNECT declares that panel SNOOK complies with Low voltage directive 2014/35/EU and EMC directive 2014/30/EU. Testing has been made according to EN 50491-5-1:2010 and EN 50491-5-2:2010 standards.



All products from PANCONNECT are intended for upgrade or recycling in accordance with the company's policy. Before the disposal of this panel comes up, please verify if this product can or cannot be upgraded or overhauled. If it's not possible, kindly arrange the disposal in accordance with valid EU directives.



This product belongs to WASTE ELECTRICAL AND ELECTRONIC EQUIPMENT (WEEE) category so the disposal is possible only in accordance with this WEEE Directive 2012/19/EU. It cannot be part of the municipal waste. For more information please check www.asekol.cz | info@asekol.cz

ABOUT THE MANUFACTURER



PANCONNECT s.r.o.
Olomoucká 601/51, 618 00 Brno
Pobřežní 249/46, 186 00 Praha
ID: 29265703, VAT ID: CZ29265703

sales@panconnect.eu, +420 603 575 486
support@panconnect.eu, +420 731 145 272
web: www.panconnect.eu
portal and configurator: pro.panconnect.eu